

**PLEASE CHECK WWW.MOLEX.COM FOR LATEST PART INFORMATION**

**Part Number:** [0522711879](#)  
**Status:** **Active**  
**Overview:**  
**Description:** 1.00mm (.039") Pitch FFC/FPC Connector, Right Angle, SMT, ZIF, Bottom Contact Style, 18 Circuits, Lead-free, High Barrier Packaging

**Agency Certification**

|     |         |
|-----|---------|
| CSA | LR19980 |
| UL  | E29179  |

**General**

|                |                    |
|----------------|--------------------|
| Product Family | FFC/FPC Connectors |
| Series         | 52271              |
| Overview       | ffc_fpc_smt        |
| Product Name   | N/A                |

**Physical**

|                                |                       |
|--------------------------------|-----------------------|
| Circuits (Loaded)              | 18                    |
| Color - Resin                  | Natural               |
| Contact Position               | Bottom                |
| Durability (mating cycles max) | 30                    |
| Entry Angle                    | 90° Angle             |
| Flammability                   | 94V-0                 |
| Mated Height (in)              | 0.118 In              |
| Mated Height (mm)              | 3.00 mm               |
| Material - Metal               | Phosphor Bronze       |
| Material - Plating Mating      | Tin-Bismuth           |
| Material - Plating Termination | Tin-Bismuth           |
| Material - Resin               | Nylon                 |
| Number of Rows                 | 1                     |
| Orientation                    | Right Angle           |
| PCB Locator                    | No                    |
| PCB Retention                  | Yes                   |
| Packaging Type                 | Embossed Tape on Reel |
| Pitch - Mating Interface (in)  | 0.039 In              |
| Pitch - Mating Interface (mm)  | 1.00 mm               |
| Polarized to PCB               | Yes                   |
| Stackable                      | No                    |
| Temperature Range - Operating  | -40°C to +85°C        |
| Termination Interface: Style   | Surface Mount         |
| Wire/Cable Type                | FFC/FPC               |

**Electrical**

|                               |                 |
|-------------------------------|-----------------|
| Current - Maximum per Contact | 0.5A            |
| Voltage - Maximum             | 50V AC (RMS)/DC |

**Material Info**

**Reference - Drawing Numbers**

|                           |                                                                                                                                                                                   |
|---------------------------|-----------------------------------------------------------------------------------------------------------------------------------------------------------------------------------|
| Application Specification | AS-52271-001                                                                                                                                                                      |
| Packaging Specification   | SPK-52271-001, SPK-52271-002                                                                                                                                                      |
| Product Specification     | PS-52271-053, RPS-52271-066, RPS-52271-067, RPS-52271-069, RPS-52271-070, RPS-52271-072, RPS-52271-073, RPS-52271-075, RPS-52271-080, RPS-52271-085, RPS-52271-087, RPS-52271-091 |
| Sales Drawing             | SD-52271-036, SD-52271-037                                                                                                                                                        |

**EU RoHS**  
**ELV and RoHS**  
**Compliant**  
**REACH SVHC**  
**Contains SVHC: No**  
**Halogen-Free**  
**Status**  
**Not Halogen-Free**

**China RoHS**



**Need more information on product environmental compliance?**

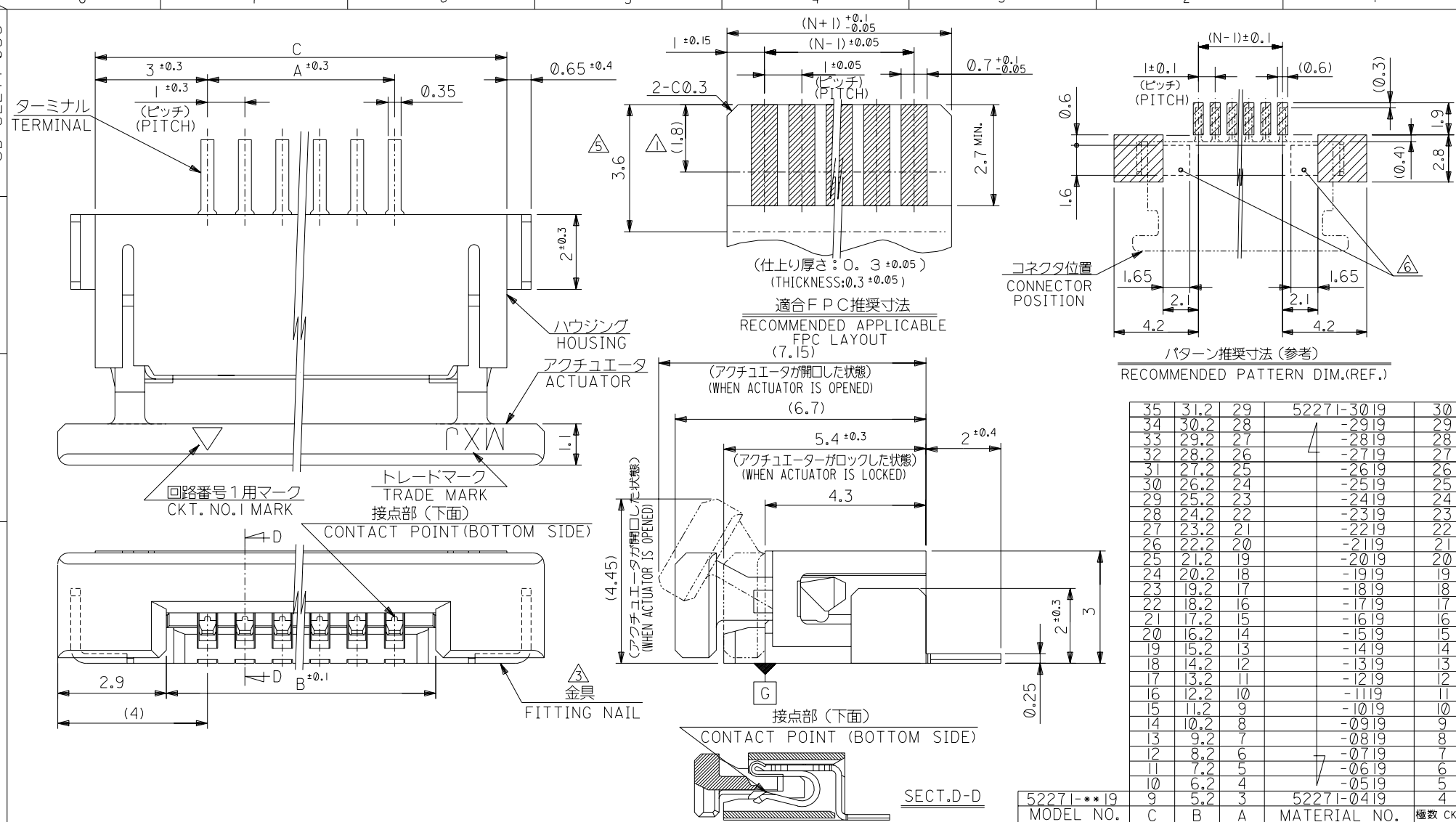
Email [productcompliance@molex.com](mailto:productcompliance@molex.com)  
 For a multiple part number RoHS Certificate of Compliance, [click here](#)

Please visit the [Contact Us](#) section for any non-product compliance questions.

**Search Parts in this Series**  
[52271Series](#)

This document was generated on 06/04/2010

**PLEASE CHECK [WWW.MOLEX.COM](http://WWW.MOLEX.COM) FOR LATEST PART INFORMATION**

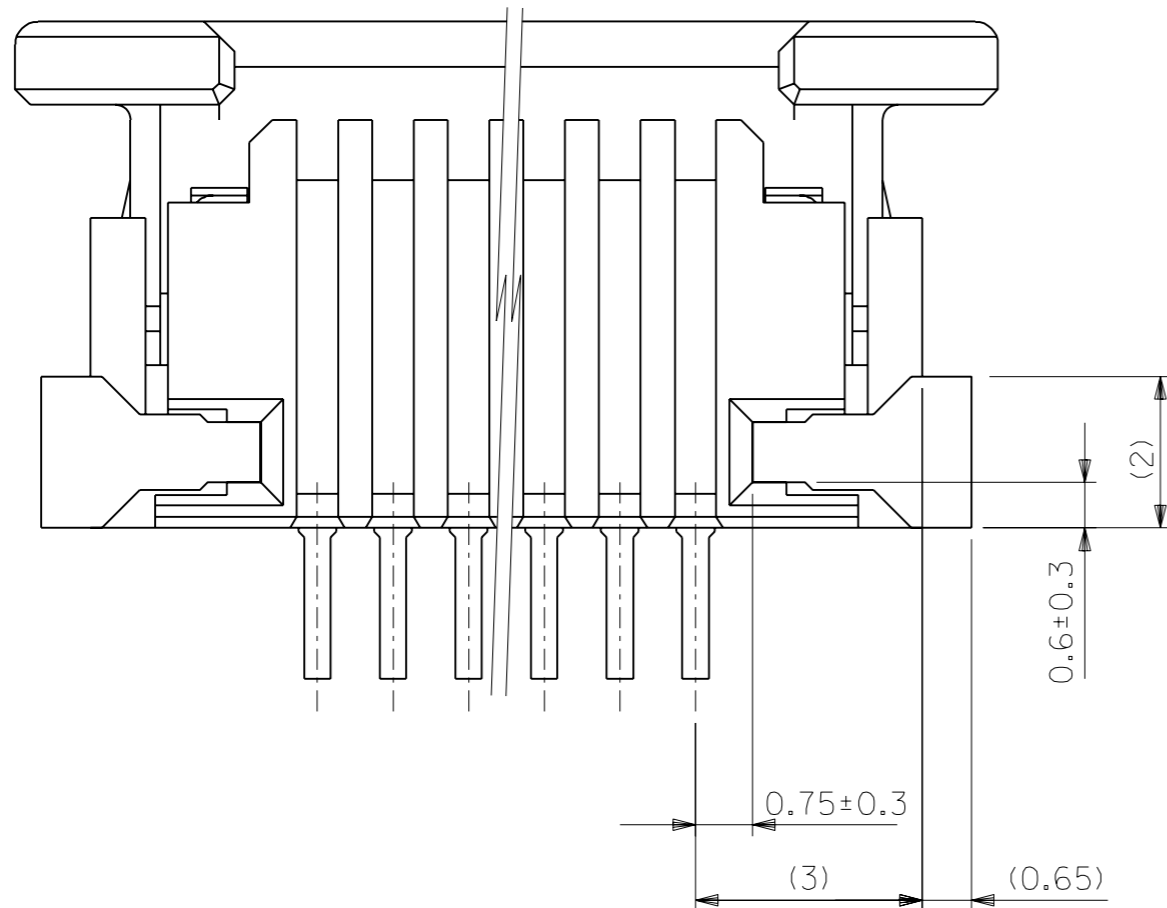


接点部 (下面) CONTACT POINT (BOTTOM SIDE)

SECT. D-D

|                         |       |        |                      |             |                    |
|-------------------------|-------|--------|----------------------|-------------|--------------------|
| 角度 ANGLE                | ±3°   |        |                      |             |                    |
| 30以上 OVER               | +0.3  | B      | 変更 REVISIED          | (2004-3551) | H.K. K.S. 04/04/02 |
| 10以上 OVER 30未満 UNDER    | +0.25 | A      | 変更 REVISIED          | (2004-3371) | H.K. K.S. 04/03/29 |
| 10未満 UNDER              | +0.2  | ①      | 新規作成 RELEASED        | (2004-3059) | H.K. K.S. 04/03/12 |
| 一般公差 GENERAL TOLERANCES |       | 記号 LTR | 変更内容 REVISION RECORD | DR. CHK.    | 日付 DATE            |

|                               |                           |   |                                                    |              |         |
|-------------------------------|---------------------------|---|----------------------------------------------------|--------------|---------|
| 52271-**19                    | C                         | B | A                                                  | 52271-0419   | 4       |
| MODEL NO.                     |                           |   |                                                    | MATERIAL NO. | 極数 CKT. |
| 材料 MATERIAL                   | 注記参照 SEE NOTES            |   | molex MOLEX-JAPAN CO.,LTD. 日本モレックス株式会社             |              |         |
| 仕上げ FINISH                    | 注記参照 SEE NOTES            |   | REVISE ONLY ON CAD SYSTEM                          |              |         |
| 適用電線範囲 WIRE RANGE             | ---                       |   | TITLE 名称 1.0 FPC CONN. Z.I.F. SMT (BOTTOM CONTACT) |              |         |
| 被覆外径 INS. RANGE               | ---                       |   | -LEAD FREE-                                        |              |         |
| DRAWN BY '04/03/12 H.KAWABATA | CHK'D BY '04/03/12 K.TOJO |   | DWG. NO. (SHEET 1 OF 2) REV B                      |              |         |
| APP'D BY '04/03/12 M.SASAO    | 尺度 SCALE ---              |   | SD-52271-036                                       |              |         |



下面図

注記 NOTES

- ① 接点部までの嵌合長さ。  
LENGTH TO CONTACT POINT.
- 2. 使用材料 MATERIAL  
ハウジング : 46ナイロン, UL94V-0  
HOUSING : 46NYLON, UL94V-0  
アクチュエータ : PPS, UL94V-0  
ACTUATOR : PPS, UL94V-0  
ターミナル : リン青銅 (t=0.25)  
TERMINAL : PHOS-BRO.(t=0.25)  
メッキ : 錫ビスマスメッキ 1.0マイクロメートル以上  
PLATING : TIN-BISMUTH 1.0 MICROMETER MINIMUM  
         : ニッケル下地 1.0マイクロメートル以上  
         : NICKEL(UNDER PLATING)1.0 MICROMETER MINIMUM  
金具 : 銅合金 (t=0.25)  
FITTING NAIL : COPPER ALLOY (t=0.25)  
メッキ : 錫メッキ 1.0マイクロメートル以上  
PLATING : TIN 1.0 MICROMETER MINIMUM  
         : ニッケル下地 1.0マイクロメートル以上  
         : NICKEL(UNDER PLATING) 1.0 MICROMETER MINIMUM
- ③ パターンはくり止め用金具  
FITTING NAIL FOR PREVENTION OF PEELING OF P.C.B.PATTERN.
- 4. エンボステープ梱包時は、アクチュエータがロックした状態とする。  
WHEN CONNECTOR IS SHIPED, ACTUATOR SHOULD BE LOCKED.
- ⑤ FPC挿入深さ。  
INSERTION DEPTH OF FPC
- ⑥ パターン書き込み禁止エリア。  
NO FOOT PRINT AREA.
- 7. 本製品は52271-\*\*-17の鉛フリー品である。  
THIS PRODUCT IS LEAD FREE OF 52271-\*\*-17.

FPCについて:

打抜き方向は導体側から補強板側を推奨致します。  
補強フィルム材質はポリイミドを推奨致します。  
接着剤は熱硬化接着剤を推奨致します。

ABOUT FPC:  
RECOMMENDED PUNCHER DIRECTION :FROM CONDUCTOR SIDE TO STIFFENER BOARD SIDE.  
RECOMMENDED MATERIAL :  
STIFFENER FILM :POLYIMIDE  
BONDING AGENT :THERMOSETTING BONDING AGENT

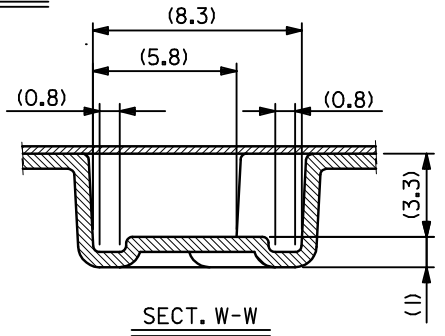
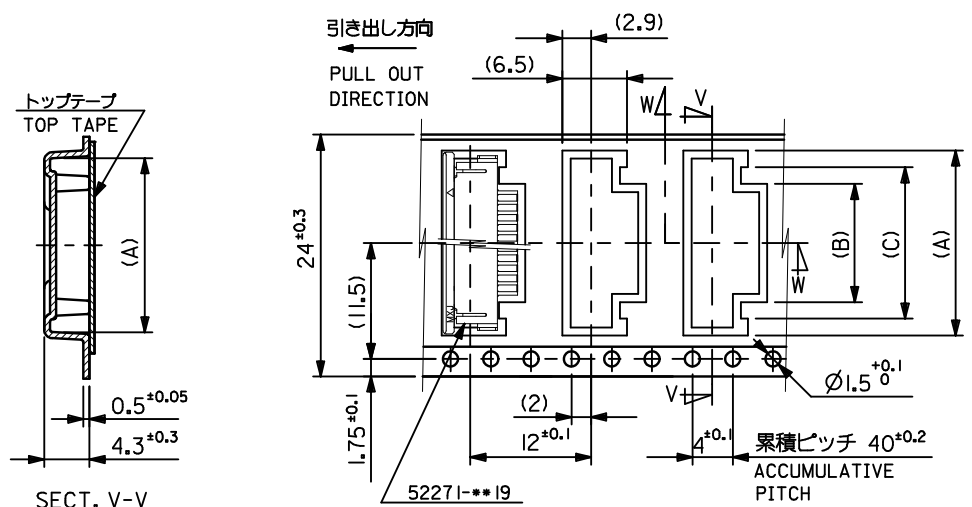
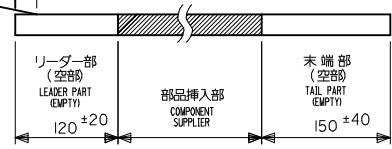
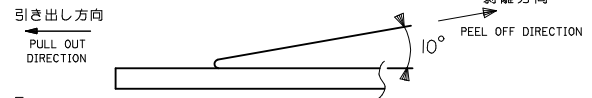
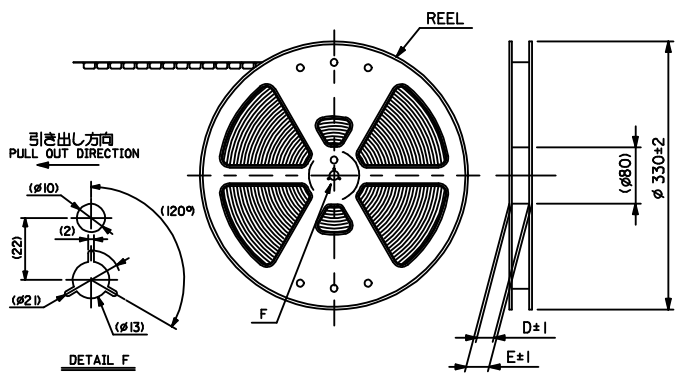
MODEL NO. 52271-\*\*-19

|                               |       |                           |                            |                                                                         |          |
|-------------------------------|-------|---------------------------|----------------------------|-------------------------------------------------------------------------|----------|
| 材料 MATERIAL                   |       | 注記参照 SEE NOTES            |                            | MOLEX-JAPAN CO.,LTD.<br>日本モレックス株式会社                                     |          |
| 仕上げ FINISH                    |       | 注記参照 SEE NOTES            |                            | REVISE ONLY ON CAD SYSTEM                                               |          |
| 適用電線範囲 WIRE RANGE             |       | ---                       |                            | TITLE 名称<br>1.0 FPC CONN. Z.I.F. SMT<br>(BOTTON CONTACT)<br>-LEAD FREE- |          |
| 被覆外径 INS. RANGE               |       | ---                       |                            | DRAWN BY '04/03/12 H.KAWABATA<br>CHK'D BY '04/03/12 K.TOJO              |          |
| DRAWN BY '04/03/12 H.KAWABATA |       | CHK'D BY '04/03/12 K.TOJO |                            | DWG. NO. (SHEET 2 OF 2) REV<br>SD-52271-036 B                           |          |
| APP'D BY '04/03/12 M.SASAO    |       | 尺度 SCALE ---              |                            |                                                                         |          |
| 角度 ANGLE                      | ±3°   | 記号 LTR                    | 変更内容 REVISION RECORD       | DR. / CHK.                                                              | 日付 DATE  |
| 30 以上 OVER                    | ±0.3  | B                         | 変更 (J2004-355)             | H.K.                                                                    | 04/04/02 |
| 10 以上 30 未満 OVER UNDER        | ±0.25 | A                         | 変更 (J2004-337)             | H.K.                                                                    | 04/03/25 |
| 10 未満 UNDER                   | ±0.2  | O                         | 新規作成 RELEASED (J2004-3059) | H.K.                                                                    | 04/03/12 |
| 一般公差 GENERAL TOLERANCES       |       |                           |                            |                                                                         |          |

NOTES

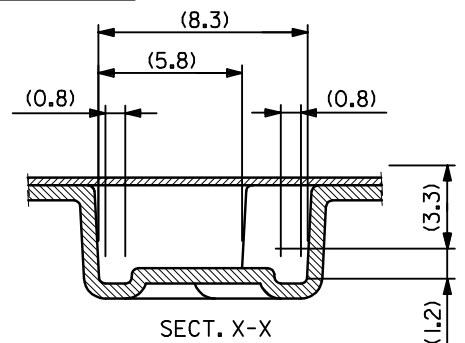
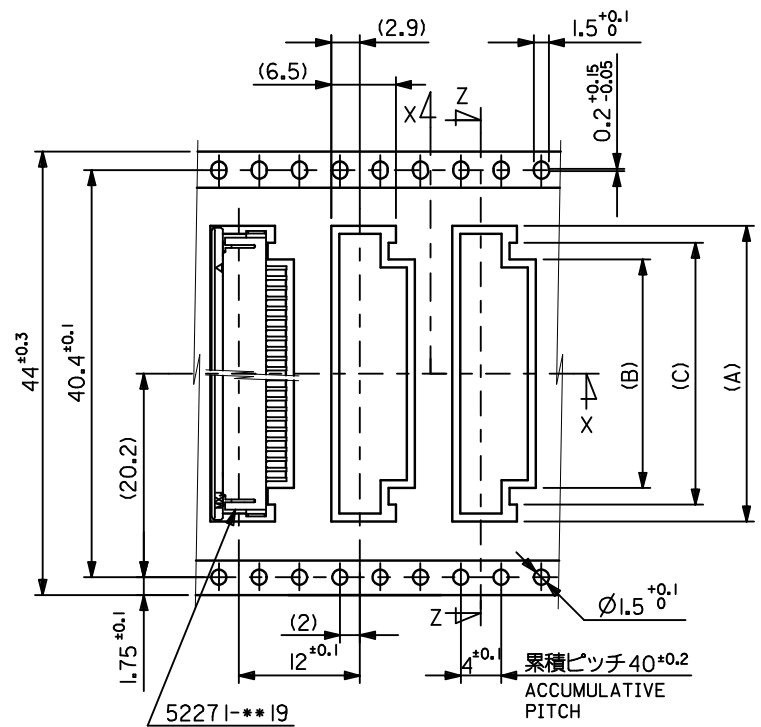
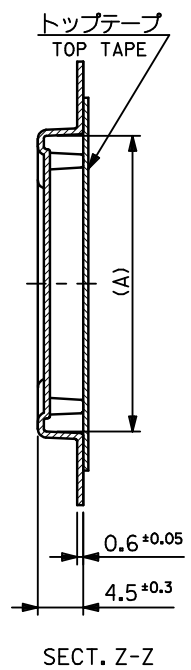
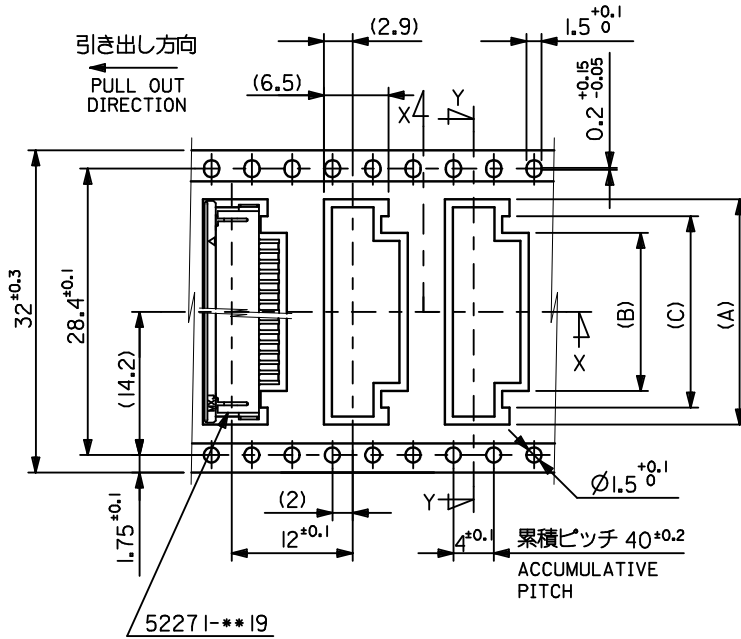
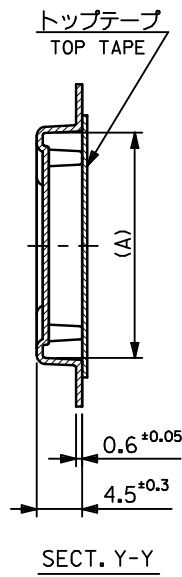
- 製品番号 52271-\*\*-19 の梱包状態はアクチュエータがロックした状態とする。  
IN THE PACKAGE, ACTUATOR OF PART NO. 52271-\*\*-19 SHOULD BE LOCKED RE DETAILED DIMENSIONS, SEE SD-52271-036.
- 梱包数量: 1000個/リール  
NUMBER OF CONNECTORS: 1000 PCS/REEL
- リードテープ長さ LEAD TAPE LENGTH  

|                                         |                                            |
|-----------------------------------------|--------------------------------------------|
| トップテープ<br>リーダー部<br>TOP TAPE LEADER PART | トップテープ<br>未接着部<br>TOP TAPE NON-BONDED PART |
| 175 ±25                                 | 25 ±5                                      |
- トップテープの剥離強度: 0.1~1.3N (10~130gf) (剥離方向は下図参照)  
尚、本規格値は、出荷時に適用。(但し、輸送時に剥離が発生しない事。)  
PEELING OFF FORCE OF TOP TAPE: 0.1~1.3N (10~130gf)  
(PEELING DIRECTION AS SHOWN IN FOLLOWING FIG.)  
THIS REQUIREMENT SHOULD BE APPLIED AT SHIPMENT  
PEEL OFF SHOULD NOT BE ALLOWED, DURING TRANSPORTATION
- 材料 (MATERIAL)  
キャリアテープ (CARRIER TAPE): ポリプロピレン (POLYPROPYLENE)  
トップテープ (TOP TAPE): PET, PE, PEF  
リール (REEL): ポリスチレン (PS) <リサイクル材を含む>  
POLYSTYRENE (PS) <RECYCLE MATERIAL CONTAINED>
- 本製品は52271-\*\*-19の鉛フリー品である。  
THIS PRODUCT IS LEAD FREE OF 52271-\*\*-19.
- 本製品は乾燥剤入り、ハイバリア梱包仕様である。  
THIS PRODUCT IS HIGH BARRIER PACKAGE WITH DESICCANT.



|    |      |      |     |      |      |              |            |
|----|------|------|-----|------|------|--------------|------------|
| 24 | 29.4 | 25.4 | 15  | 11.4 | 18.3 | 52271-1179   | 11         |
|    |      |      | 14  | 10.4 | 17.3 | -1079        | 10         |
|    |      |      | 13  | 9.4  | 16.3 | -0979        | 9          |
|    |      |      | 12  | 8.4  | 15.3 | -0879        | 8          |
|    |      |      | 11  | 7.4  | 14.3 | -0779        | 7          |
|    |      |      | 10  | 6.4  | 13.3 | -0679        | 6          |
|    |      |      | 9   | 5.4  | 12.3 | -0579        | 5          |
|    |      |      | 8   | 4.4  | 11.3 | 52271-0479   | 4          |
|    |      |      | (C) | (B)  | (A)  | MATERIAL NO. | 種数<br>CKT. |

|                                                                               |                                                       |                                                                                                                               |       |                            |                    |                                                            |                        |                        |  |
|-------------------------------------------------------------------------------|-------------------------------------------------------|-------------------------------------------------------------------------------------------------------------------------------|-------|----------------------------|--------------------|------------------------------------------------------------|------------------------|------------------------|--|
| REVISED<br>EC NO: J2009-2061<br>DRWN:TKON<br>CHKD:HMATSUMOTO<br>APPR:NIKI ITA | DESCRIPTION<br>2009/05/20<br>2009/05/21<br>2009/05/21 | GENERAL TOLERANCES (UNLESS SPECIFIED)                                                                                         |       | DIMENSION STYLE<br>MM ONLY |                    | SCALE<br>---                                               | DESIGN UNITS<br>METRIC | THIRD ANGLE PROJECTION |  |
|                                                                               |                                                       | 10 UNDER                                                                                                                      | ±0.2  | DRAWN BY<br>H. KAWABATA    | DATE<br>2004/03/12 | TITLE<br>EMBOSSED TAPE PACKAGE FOR 52271-**-19 -LEAD FREE- |                        |                        |  |
|                                                                               |                                                       | 10 OVER 30 UNDER                                                                                                              | ±0.25 | CHECKED BY<br>K. TOJO      | DATE<br>2004/03/12 | MOLEX INCORPORATED                                         |                        |                        |  |
|                                                                               |                                                       | 30 OVER                                                                                                                       | ±0.3  | APPROVED BY<br>M. SASAO    | DATE<br>2004/03/12 |                                                            |                        |                        |  |
| ANGULAR ±3                                                                    |                                                       | DRAFT WHERE APPLICABLE MUST REMAIN WITHIN DIMENSIONS                                                                          |       | SEE TABLE                  |                    | DOCUMENT NO.<br>SD-52271-037                               |                        | SHEET NO.<br>1 OF 3    |  |
| SIZE A3                                                                       |                                                       | THIS DRAWING CONTAINS INFORMATION THAT IS PROPRIETARY TO MOLEX INCORPORATED AND SHOULD NOT BE USED WITHOUT WRITTEN PERMISSION |       |                            |                    |                                                            |                        |                        |  |



|                                |      |       |     |      |       |              |            |       |       |    |
|--------------------------------|------|-------|-----|------|-------|--------------|------------|-------|-------|----|
| 44                             | 49.4 | 45.4  | 31  | 27.4 | 34.35 | 52271-2779   | 27         |       |       |    |
|                                |      |       | 30  | 26.4 | 33.35 | -2679        | 26         |       |       |    |
|                                |      |       | 29  | 25.4 | 32.35 | -2579        | 25         |       |       |    |
|                                |      |       | 28  | 24.4 | 31.35 | -2479        | 24         |       |       |    |
|                                |      |       | 27  | 23.4 | 30.35 | -2379        | 23         |       |       |    |
|                                |      |       | 26  | 22.4 | 29.35 | -2279        | 22         |       |       |    |
|                                |      |       | 25  | 21.4 | 28.35 | -2179        | 21         |       |       |    |
|                                |      |       | 24  | 20.4 | 27.35 | -2079        | 20         |       |       |    |
|                                |      |       | 23  | 19.4 | 26.35 | -1979        | 19         |       |       |    |
|                                |      |       | 22  | 18.4 | 25.35 | -1879        | 18         |       |       |    |
|                                |      |       | 21  | 17.4 | 24.35 | -1779        | 17         |       |       |    |
|                                |      |       | 20  | 16.4 | 23.35 | -1679        | 16         |       |       |    |
|                                |      |       | 32  | 37.4 | 33.4  | 19           | 15.4       | 22.35 | -1579 | 15 |
|                                |      |       |     |      |       | 18           | 14.4       | 21.35 | -1479 | 14 |
| 17                             | 13.4 | 20.35 |     |      |       | -1379        | 13         |       |       |    |
| 16                             | 12.4 | 19.35 |     |      |       | 52271-1279   | 12         |       |       |    |
| キャリアテープ幅<br>CARRIER TAPE WIDTH |      |       | (C) | (B)  | (A)   | MATERIAL NO. | 標数<br>CKT. |       |       |    |

|                                                                                                                                       |                                                                                                                                                                                        |                            |                    |                                                            |                        |                              |
|---------------------------------------------------------------------------------------------------------------------------------------|----------------------------------------------------------------------------------------------------------------------------------------------------------------------------------------|----------------------------|--------------------|------------------------------------------------------------|------------------------|------------------------------|
| REVISED<br>EC NO.: J2009-2061<br>DRWN:TKON 2009/05/20<br>CHKD:HATSUMOTO 2009/05/21<br>APPR:NIKI ITA 2009/05/21<br>REV A               | DESCRIPTION<br>GENERAL TOLERANCES (UNLESS SPECIFIED)<br>10 UNDER ±0.2<br>10 OVER 30 UNDER ±0.25<br>30 OVER ±0.3<br>ANGULAR ±3°<br>DRAFT WHERE APPLICABLE MUST REMAIN WITHIN DIMENSIONS | DIMENSION STYLE<br>MM ONLY | SCALE<br>---       | DESIGN UNITS<br>METRIC                                     | THIRD ANGLE PROJECTION |                              |
|                                                                                                                                       |                                                                                                                                                                                        | DRAWN BY<br>H. KAWABATA    | DATE<br>2004/03/12 | TITLE<br>EMBOSSED TAPE PACKAGE FOR 52271-**-19 -LEAD FREE- |                        |                              |
|                                                                                                                                       |                                                                                                                                                                                        | CHECKED BY<br>K. TOJO      | DATE<br>2004/03/12 | MOLEX INCORPORATED                                         |                        |                              |
|                                                                                                                                       |                                                                                                                                                                                        | APPROVED BY<br>M. SASAO    | DATE<br>2004/03/12 | MATERIAL NO.<br>SEE TABLE                                  |                        | DOCUMENT NO.<br>SD-52271-037 |
| SIZE A3 THIS DRAWING CONTAINS INFORMATION THAT IS PROPRIETARY TO MOLEX INCORPORATED AND SHOULD NOT BE USED WITHOUT WRITTEN PERMISSION |                                                                                                                                                                                        |                            |                    |                                                            |                        |                              |

